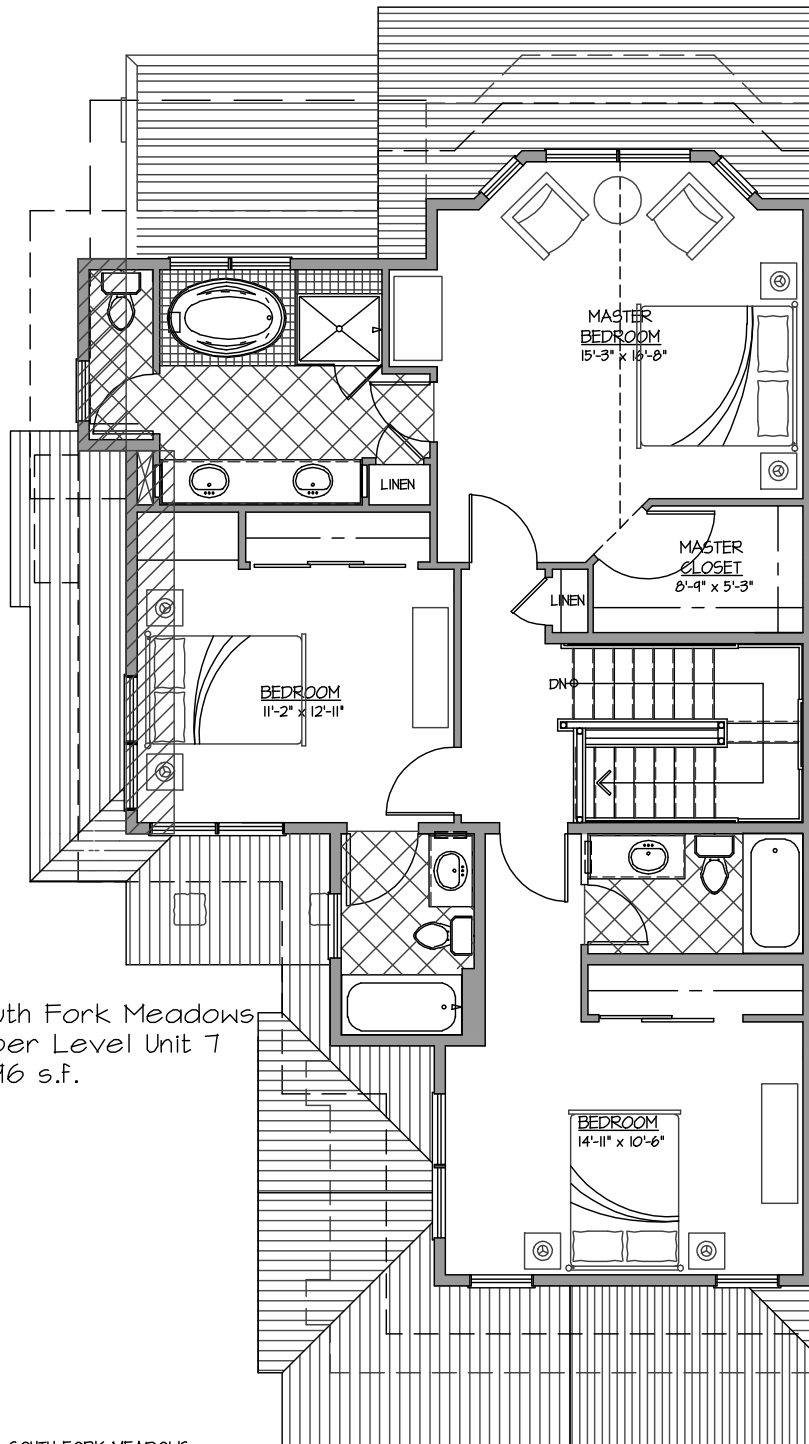


South Fork Meadows  
 Main Level Unit 7  
 862 s.f. this level  
 3,178 s.f. house total

SOUTH FORK MEADOWS  
 04/09/07 ERIC SMITH ASSOCIATES, P.C.

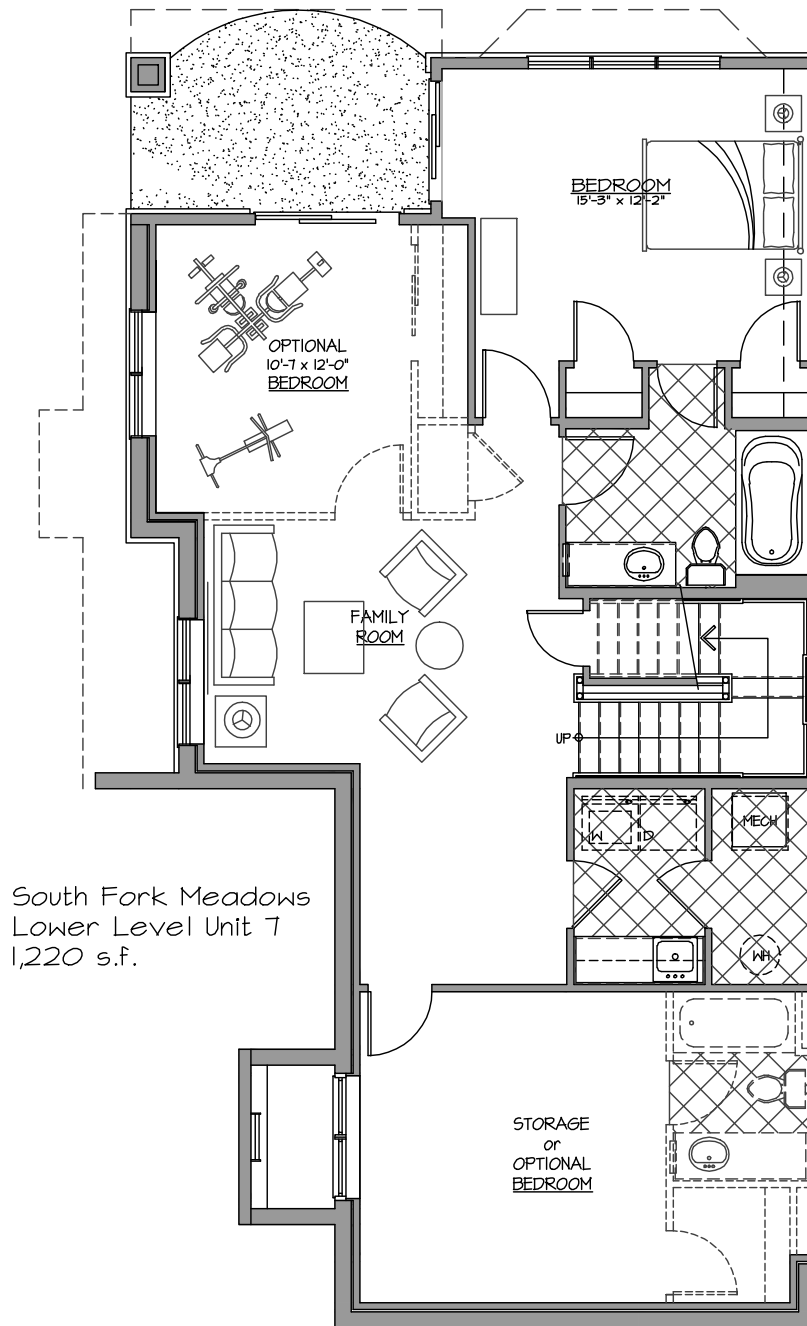
All dimensions and locations are approximate and subject to construction variations. The developer reserves the right to change and/or alter materials, specifications, dimensions, designs and price without notice. Verbal representations cannot be relied upon as correctly stating the representations of the developer. These drawings, specifications and the contents therein, are specifically excluded from any contract to purchase the residence. Please refer to the Purchase Contract and other home owner documents for correct representations.



South Fork Meadows  
Upper Level Unit 7  
1,096 s.f.

SOUTH FORK MEADOWS  
04/09/07 ERIC SMITH ASSOCIATES, PC.

All dimensions and locations are approximate and subject to construction variations. The developer reserves the right to change and/or alter materials, specifications, dimensions, designs and price without notice. Verbal representations cannot be relied upon as correctly stating the representations of the developer. These drawings, specifications and the contents therein, are specifically excluded from any contract to purchase the residence. Please refer to the Purchase Contract and other home owner documents for correct representations.



SOUTH FORK MEADOWS  
04/09/07 ERIC SMITH ASSOCIATES, PC.

All dimensions and locations are approximate and subject to construction variations. The developer reserves the right to change and/or alter materials, specifications, dimensions, designs and price without notice. Verbal representations cannot be relied upon as correctly stating the representations of the developer. These drawings, specifications and the contents therein, are specifically excluded from any contract to purchase the residence. Please refer to the Purchase Contract and other home owner documents for correct representations.